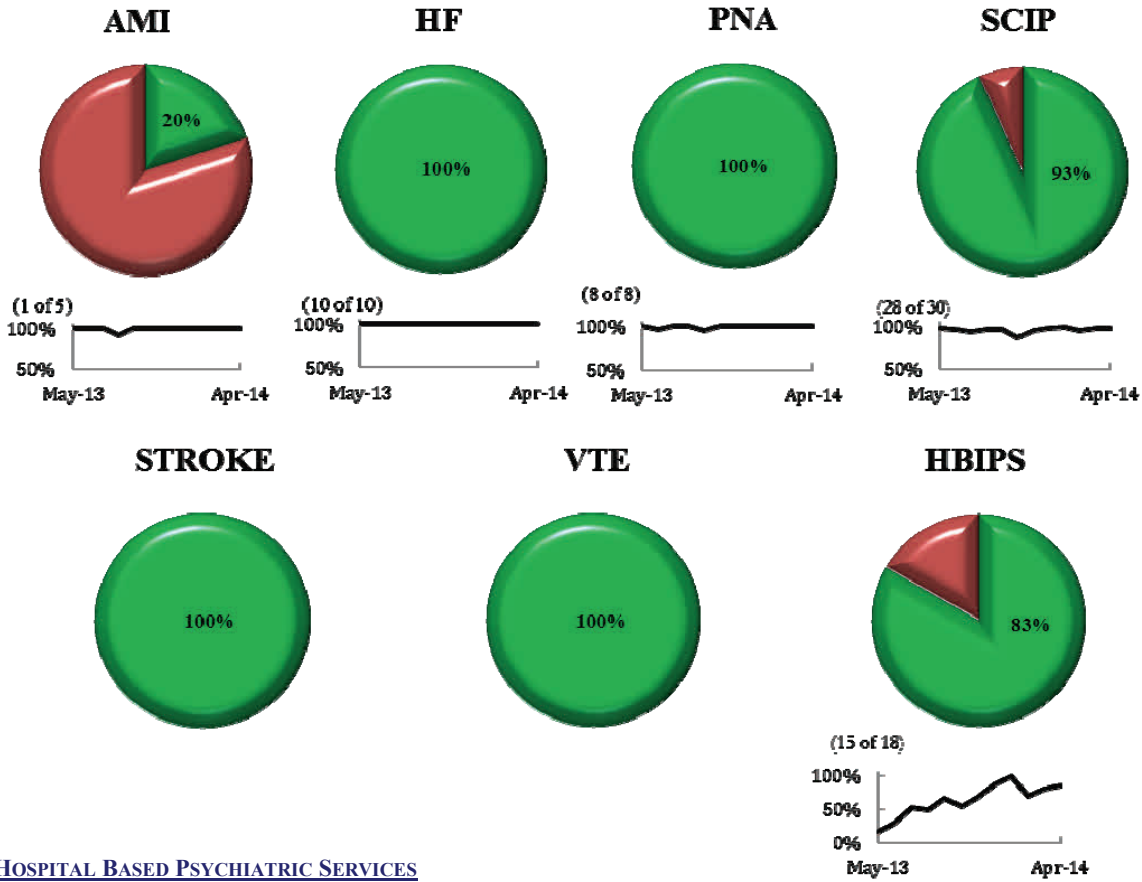


CORE MEASURE PERFORMANCE

-Deborah Rodrigues ext:16181

% of Core Measure Perfect Care Performance



HBIPS— HOSPITAL BASED PSYCHIATRIC SERVICES

- ⇒ Patients must have an 'appropriate reason' for discharge on more than one antipsychotic medication
- ⇒ Patients need to have a continuing care plan (Discharge Summary) written and transmitted to the next level of care provider within 5 days of discharge

SCIP—SURGICAL CARE IMPROVEMENT PROJECT

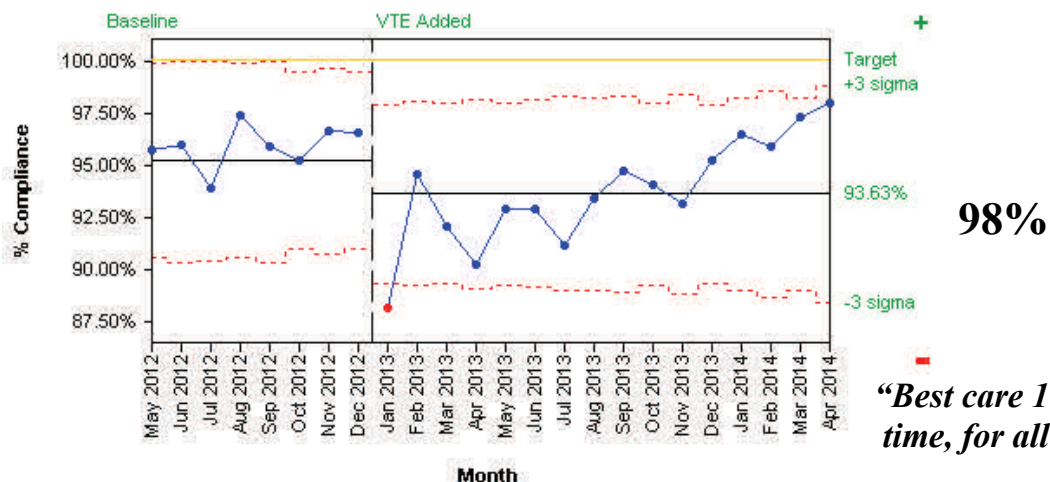
- ⇒ MD documentation for reasons extending antibiotics past 24 hours needed
- ⇒ MD documentation for reasons extending antibiotics past 72 hours for cardiac cases
- ⇒ Patients need to receive appropriate antibiotic

AMI—ACUTE MYOCARDIAL INFARCTION

- ⇒ Beta Blocker, Statin and ASA at discharge

Composite Core Measure - UHC CMS Group by Month

Division = ALL



*Opportunities for improvement in red

"Best care 100% all the time, for all our patients."

Jun 12, 2014 10:30:43