

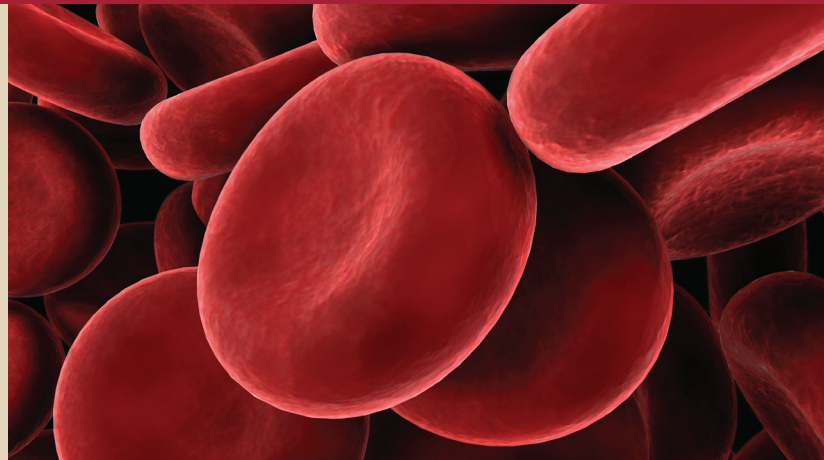
STANFORD HEMATOLOGY REVIEW OF THE 56TH ANNUAL ASH MEETING

February 7, 2015 – 8:15 am - 4:00 pm

Li Ka Shing Center for Learning and
Knowledge, Stanford, CA

A continuing medical education activity presented by the
Division of Hematology at Stanford University School of
Medicine

Sponsored by the Stanford University
School of Medicine



PROGRAM *(subject to change)*

- 8:15-8:45 am **Registration and Breakfast**
- 8:45-9:00 am **Welcome/Introduction**
Jason Gotlib, MD
- 9:00-9:40 am **Myelodysplastic Syndromes**
Peter Greenberg, MD
- 9:40-10:20 am **Multiple Myeloma/Amyloidosis**
Michaela Liedtke, MD
- 10:20-10:40 am **Break**
- 10:40-11:20 am **Bleeding and Thrombotic Disorders**
Lawrence Leung, MD
- 11:20-12:00 pm **Myeloproliferative Neoplasms**
Jason Gotlib, MD
- 12:00-1:00 pm **Lunch**
- 1:00-1:40 pm **Red Blood Cell Disorders and Iron Homeostasis**
Stanley Schrier, MD
- 1:40-2:20 pm **Chronic Lymphocytic Leukemia**
Steven Coutre, MD
- 2:20-2:40 pm **Break**
- 2:40-3:20 pm **Acute Myeloid Leukemia**
Bruno Medeiros, MD
- 3:20-4:00 **Hodgkin and Non-Hodgkin Lymphomas**
Ranjana Advani, MD
- 4:00 pm **Adjourn**

*Opportunities for Q&A will be provided at
the conclusion of each presentation.*

FACULTY

All faculty are affiliated with Stanford University School of Medicine unless otherwise noted.

Jason Gotlib, MD

Associate Professor of Medicine (Hematology)
Course Director

Michaela Liedtke, MD

Assistant Professor of Medicine (Hematology)
Course Co-Director

Ranjana Advani, MD

Saul A. Rosenberg Professor of Lymphoma

Steven Coutre, MD

Professor of Medicine (Hematology), Emeritus

Peter Greenberg, MD

Professor of Medicine (Hematology), Emeritus

Lawrence Leung, MD

Maureen Lyles D'Ambrogio Professor of Medicine (Hematology)

Bruno C. Medeiros, MD

Associate Professor of Medicine (Hematology)

Stanley Schrier, MD

Professor of Medicine (Hematology), Emeritus

Faculty Disclosure

The Stanford University School of Medicine adheres to ACCME Essential Areas, Standards, and Policies regarding industry support of continuing medical education. Disclosure of faculty and commercial relationships will be made prior to the activity.



Stanford
MEDICINE

STANFORD HEMATOLOGY REVIEW OF THE 56TH ANNUAL ASH MEETING

February 7, 2015 — 8:15 am - 4:00 pm

Li Ka Shing Center for Learning and Knowledge
Stanford, CA

STATEMENT OF NEED

This CME event led by the Stanford Division of Hematology seeks to fulfill the need of practicing hematologists/oncologists, nurse practitioners, physicians assistants, pharmacists and allied health care practitioners in the academic and community settings to increase the fund of knowledge in malignant and benign hematology by reviewing the latest data presented at the 56th Annual American Society of Hematology Meeting. The goal of the symposium is to optimize care of patients by incorporating the latest best practices in diagnosis and treatment highlighted at ASH.

TARGET AUDIENCE

This regional conference is designed to meet the educational needs of Hematologists, Oncologists, Nurse Practitioners, Physician Assistants, Nurses, and Pharmacists who care for patients with malignant and benign hematologic diseases.

LEARNING OBJECTIVES

At the conclusion of this activity, participants should be able to review and evaluate data from the most recent clinical trials and develop strategies to:

- Evaluate new chemotherapy/biologic regimens for different subpopulations of acute myeloid leukemia patients based on clinical and genetic prognostic factors and determine how to apply them to treatment decisions
- Apply strategies to optimally utilize JAK inhibition and other novel agents in patients with myelofibrosis and other relevant myeloproliferative neoplasms based on the new prognostic models to risk stratify MPN patients
- Determine available therapeutic options for patients with low- or high-risk myelodysplastic syndromes, including those who are relapsed/refractory to hypomethylating agents and utilize the IPSS-R prognostic scoring system and new mutation data to classify patients for treatment
- Identify best combination regimens and novel agents for relevant populations of myeloma patients, including transplant eligible vs. ineligible
- Evaluate differences in indications, dose, and safe use of oral anticoagulants and assess new experimental data regarding mechanisms of bleeding and thrombosis
- Implement BTK and PI3K inhibition, anti-CD30 antibody drug immunoconjugate therapy and other agents for the treatment of chronic lymphocytic leukemia and/or lymphomas, either alone or in combination with conventional therapies
- Incorporate new data for optimizing treatment of iron overload/deficiency and analyze the biologic pathways relevant to iron homeostasis, including inflammatory states; evaluate novel pre-clinical data related to hemoglobinopathies

ACCREDITATION

The Stanford University School of Medicine is accredited by the Accreditation Council for Continuing Medical Education (ACCME) to provide continuing medical education for physicians.

CREDIT DESIGNATION

Stanford University School of Medicine designates this live activity for a maximum of 5.25 *AMA PRA Category 1 Credits*[™]. Physicians should claim only the credit commensurate with the extent of their participation in the activity

The California Board of Registered Nursing recognizes that Continuing Medical Education (CME) is acceptable for meeting RN continuing education requirements; as long as the course is certified for *AMA PRA Category 1 Credits*[™] (rn.ca.gov). Nurses will receive a Certificate of Attendance following this activity that may be used for license renewal.

REGISTRATION

Stanford Hematology Review of the 56th Annual ASH Meeting

February 7, 2015

Registration is complimentary, however, registration is **required**.

Please register online at <http://cme.stanford.edu/hematology>. Your registration is complete once you receive an email confirmation.

Stanford Center for Continuing Medical Education

1070 Arastradero Road, Suite 230

Palo Alto, CA 94304

Phone: 650.497.8554

Email: stanfordcme@stanford.edu

Web: <http://cme.stanford.edu/>



Stanford School of Medicine is fully ADA compliant. If you have needs that require special accommodations, including dietary concerns, please contact cmariem@stanford.edu.

CONFERENCE LOCATION

Li Ka Shing Center for Learning and Knowledge

291 Campus Drive, 2nd Floor

Stanford, CA 94305

<http://lksc.stanford.edu/>

ACCOMMODATIONS

For lodging near the Stanford campus, please visit <http://visit.stanford.edu/plan/lodging> to view the Stanford Lodging Guide.

For questions about the symposium, please contact Cassandra Alcazar, CME Conference Coordinator, at (650) 724-5318 or email cmariem@stanford.edu



To register online, visit <http://cme.stanford.edu/hematology/>